

FOR LEASE



GENERAL INFORMATION

- Within 5 miles of the Downtown Medical District
- Within 1 mile of the Southwest Medical District
- Close Proximity to I-20 and Chisholm Trail Parkway

OFFICE SPACE AVAILABLE

- 2,500 SF Available
- Building Signage Opportunity
- Rate: \$21.50/SF + NNN
- TI allowance negotiable
- Ample Parking (4.5/1,000)
- Traffic: 17,000 Vehicles/Day

6628 Bryant Irvin Road

Fort Worth, Texas 76132



WORTH
COMMERCIAL
REAL ESTATE

Jerry Bolz
817-808-8997
jerry.bolz@worthcre.net

LEASING INFORMATION
Slater Howe
817-458-8131
slater.howe@worthcre.net



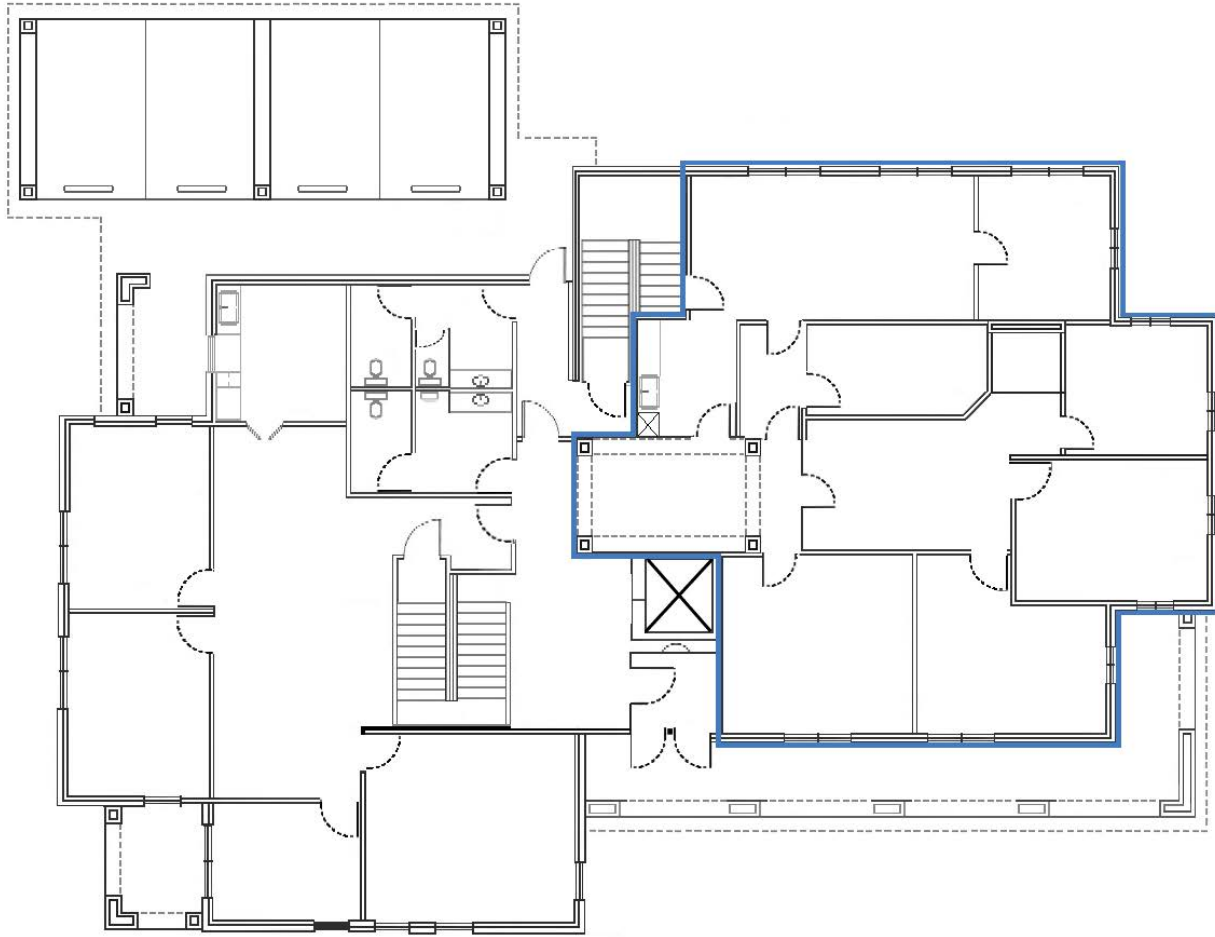
WORTH
COMMERCIAL
REAL ESTATE

Jerry Bolz
817-808-8997
jerry.bolz@worthcre.net

LEASING INFORMATION

Slater Howe
817-458-8131
slater.howe@worthcre.net

6628 Bryant Irvin Road, Fort Worth



2,500 SF Available - 1st Floor

